

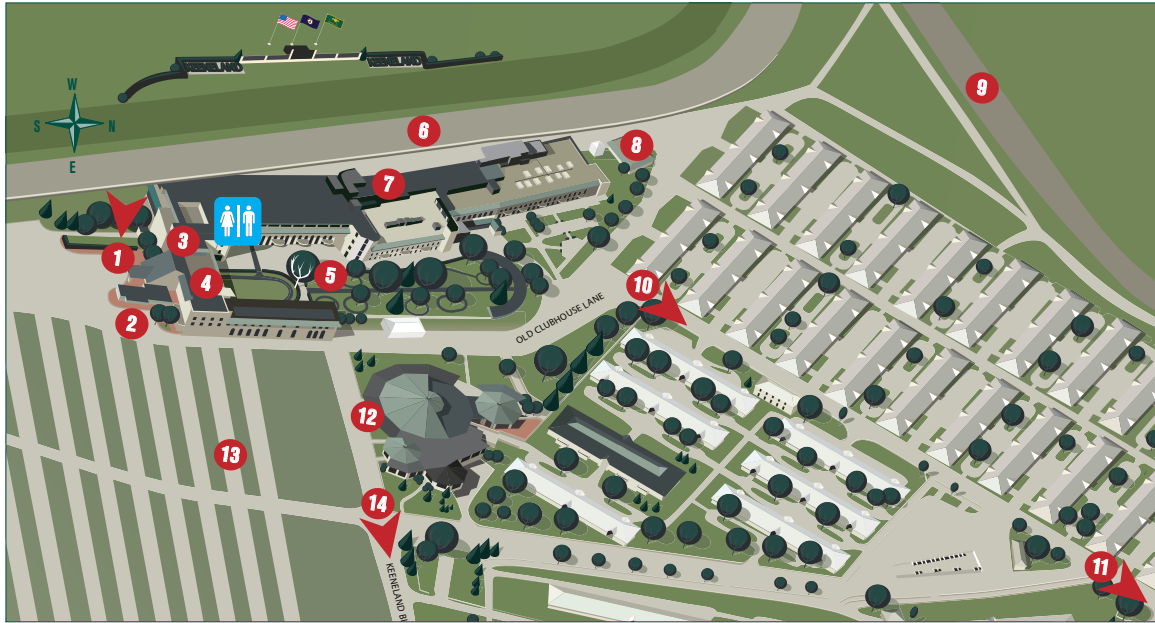
WALKING TOUR

OF THE KEENELAND GROUNDS

Live Racing Every April & October | Thoroughbred Auctions January, September & November

Keeneland, which opened for racing in October 1936, was established on property purchased a year earlier from John Oliver "Jack" Keene, a colorful character and successful Thoroughbred trainer in Russia and Japan in the early 1900s. The property included a 1 1/16-mile track and a nearly completed stone building adaptable for a Clubhouse and other uses.

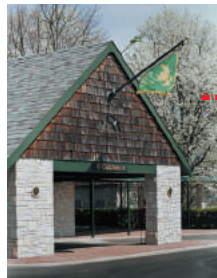
Thank you for visiting Keeneland. We hope you come back soon to enjoy a day at the races.



START HERE: The Keeneland walking tour begins at the Clubhouse adjacent to the Grandstand South entrance.

1. Clubhouse

- The original Clubhouse building was designed in the mind of John Oliver "Jack" Keene. No blueprints were used in the construction.
- The foundation was created extra thick and most of the walls are stone-faced with 4 x 8 tile backing on the interiors. Virtually no wood was used, except on the third floor, which was intended to be used as a ballroom.
- The Clubhouse is private, with membership primarily open to those who race and buy or sell their Thoroughbreds at Keeneland.
- The stone pattern used by Jack Keene on the original Clubhouse is known as a "two over two" style of stonework. It was thought to be influenced by his travels abroad and consists of two smaller stones set over a large stone with another two small stones set below—almost in a north-south-east-west orientation. The result, from a distance, is an attractive and unique quilted effect.



From the Clubhouse, turn to the right to arrive at Grandstand South and Welcome Center.



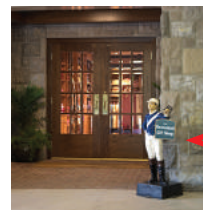
2. Grandstand South and Welcome Center

- One of the three public entrances into the Keeneland Paddock and Grandstand (the others are Grandstand East and Grandstand North).
 - The Welcome Center handles race meet ticket sales and guided tours.
- Proceed through Grandstand South entrance, bear left, then take next left down the hallway just past The Keeneland Shop. At the end of the hallway, turn right to reach the Early History Display.

4. The Keeneland Shop

Located opposite the Paddock near the Clubhouse, this unique shop is packed with wonderful gifts for all occasions.

Once outside the shop, go straight and follow the fence line of the Walking Ring to view the Paddock.



-3. Early History

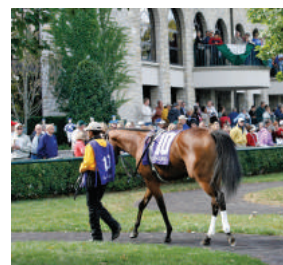
Gain a historical perspective of Keeneland, displayed in the corridor of the Paddock-side rear entrance to the Clubhouse.

Follow the hallway back to the Walking Ring to explore the unique gifts at The Keeneland Shop.

5. Paddock

- The Paddock at Keeneland is actually two distinct areas—a Saddling Paddock and Walking Ring.
- The Saddling Paddock (opposite side of the Paddock from The Keeneland Shop) is defined by multiple trees and small walking rings. Horses are led around the rings by their grooms to keep them calm and warmed up. The rings around the trees and paths leading through the Paddock to the track are covered with rubberized brick (made from recycled tires) that offers secure footing for the horses.
- The stalls at the end of the Saddling Paddock are where horses are tacked and jockeys mount when it is raining.
- In between the Saddling Paddock and Walking Ring you will see jockey statues (in front of Elevator B) painted in the silks of the winners of recent Grade I races at Keeneland.
- Before the horses reach the Walking Ring, the jockeys emerge from the Jockeys Quarters (near Walking Ring, next to doors for the Executive Offices) and walk in single file to the center of the ring. The Walking Ring leads to the tunnel and out to the track.
- The tall white-barked tree in the middle of the Paddock is a sycamore planted about the time Keeneland opened in 1936.

From the Paddock, enter the ground floor level of the Grandstand adjacent to Elevator B. Go straight through the facility to trackside. Walk along the rail to view the Grandstand, Winner's Circle, race track and infield.



6. Race Track

- In the summer of 2014, Keeneland installed an innovative dirt racing surface that uses a unique vertical drainage system on its main track.
- One mile and one-sixteenth oval, with 4 1/2-furlong and 7-furlong chutes. Stretch length 1,236 feet. Width 75-80 feet.
- The track was originally built at a cost of \$52,000, a huge sum in the 1930s. Jack Keene anticipated running his races in the morning with the sun to his patron's backs. Today, the afternoon sun brings out a bevy of Keeneland's signature white parasols.
- Keeneland became the first track in America to install an aluminum rail when the original wooden rail was replaced in 1949.
- In fall of 2006, Keeneland unveiled a state-of-the-art LED tote board in the infield and was the first race track in the U.S. to offer Trakus video race technology to its patrons. Trakus provides the ability—via sensor chips carried in saddlecloths and antennae positioned around the race track—to track each horse in a race electronically and digitally in real time. Information on individual horses is collected and displayed in various viewer-friendly animated forms.
- The two "Keeneland" hedges on each side of the LED tote board are Japanese yews.
- Originally, two lakes graced the infield but the glare from the afternoon sun blinded patrons in the Grandstand so they were drained and filled in.
- The turf course is 7 1/2 furlongs.

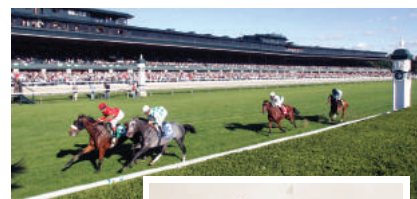
Head back into the first floor Grandstand and take the stairs up to the second level.



7. Grandstand

- The original wooden Grandstand was designed by architect Robert McMeekin and had a seating capacity of only 2,500. The box seat section was replaced by steel, concrete and aluminum construction in 1950 and in 1953 the Grandstand was expanded to a capacity of 3,849. A 384-person dining room was also added then.
- In 1963, a renovation project linked the Grandstand and Clubhouse and, in 1976, the old wooden Grandstand was entirely replaced by concrete and steel. Keeneland's biggest expansion came in 1991 when 22 Corporate Boxes were added along with two dining areas, the 500-person Phoenix Room and the 65-person Lafayette Room, all on the fourth floor.
- Take time to visit the Winner's Circle on the left side as you face the track. This is possibly the most coveted piece of real estate on the grounds.
- The "apron" is the large paved area leading from the Grandstand to the race track.
- Adjacent to the Winner's Circle is the jockey's scale. Each horse in a race is assigned a specific weight to carry that includes the weight of the rider and tack. These weights are checked prior to the running of the race in the Jockeys Quarters and after each event in front of the public by a racing official called the Clerk of Scales.
- Unique to Keeneland is the Shoe Board on display in the middle of the Grandstand on the ground floor near Elevator B. Here fans can see the various types of horseshoes worn by racehorses.
- On the second level of the Grandstand, stop by Box 58, which is the box originally assigned to the Keene family.

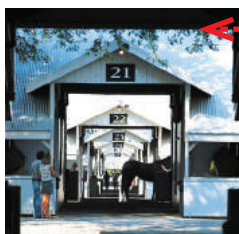
The second level of the Grandstand (trackside) will give you a great vantage point to view the track. When you have read about the Grandstand and the race track, go back down to the far right, past the Finish Line.



10. Stable Area

- In 1935, six wooden barns were erected from remnants of barns from the old Kentucky Association track to prepare for Keeneland's inaugural race meet.
- Today, the number of barns in the stable area is 57 with a capacity of 1,951 horses.

To sample authentic track foods, take the road next to barn 20 until it stops in front of the Track Kitchen.



9. Training Track

- This smaller track northwest of the main track is five-eighths of a mile training track with a synthetic surface. It is used year-round for training. Weather permitting, at least one track always remains in use throughout the year.

If you have gone down to see the training track, re-trace your steps and continue on the path parallel to the back of the Grandstand to view the stable area.



11. Track Kitchen

- At the east end of the stable area is Keeneland's famous Track Kitchen, where owners, trainers and stable employees get their coffee and breakfast.
- Visitors are always welcome.
Hours: Mon-Fri 6 a.m. to 2 p.m.,
Sat-Sun 6 a.m. to 11:30 a.m.
During Sales: 5 a.m. to 5 p.m.
During Racing: 5 a.m. to 7 p.m.
Closed major holidays.

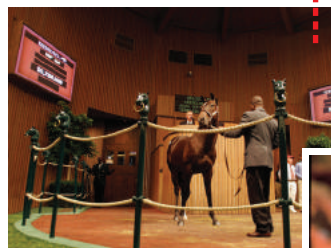


Follow the same road back and turn left to continue to the Sales Pavilion.

12. Sales Pavilion

- Keeneland is the best-known Thoroughbred sales company in the world.
- Keeneland held its first sale in 1938.
- Keeneland hosts 3 sales a year—January Horses of All Ages Sale, September Yearling Sale and November Breeding Stock Sale.

From the Sales Pavilion, get in your car to explore Keeneland's parking lot. As you head out Keeneland Boulevard toward the Library you will see Keeneland's unique drive-thru wagering booths on the right used during major racing events.



13. Parking Lot

- Landscape architects of national renown, Innocenti & Weibel, designed the tree-lined parking lot and grounds to create a park-like setting.
- Note the large green cast iron "KA" post as you enter and leave the Keeneland grounds. These are replicas of the original posts found at the Kentucky Association track once located in downtown Lexington. While removing building materials purchased from the old Kentucky Association track, Keeneland's first President, Hal Price Headley, was delighted when he realized that the "KA" monogram in the laurel wreath also could represent the new Keeneland Association track.

To tour the Library, follow the double-laned road that leads to Man o' War Blvd.



8. Racing Office

- As you walk past the end of the Grandstand, you will see the Racing Office. This is where the business of racing is conducted. The Racing Secretary and staff take nominations and entries for each race day.
- Past the Racing Office is an area known as "the gap." This is the main entrance to the race track during training hours. Normal training hours for the main track are from 5:30 a.m. to 10 a.m.
- The draw for post positions takes place at the Racing Office using a small leather "bottle" to shake out numbered "pills" to assure a random drawing—also known as a "pill pull."

Just past the Racing Office and the gap is a parking lot and barn complex. You will see the training track nestled below.



14. Library

- One of the world's largest repositories of information related to the Thoroughbred, the Library contains nearly 300,000 books; approximately 1 million photographic negatives; memorabilia such as a stopwatch used to time Man o' War; and much more.
- The Library was established in 1939 through a donation from William Arnold Hanger. The current building opened in July 2002.
- Many special collections have been generously donated over the years.
- Open year-round from 8:30 a.m. to 4:30 p.m. each weekday, except major holidays.